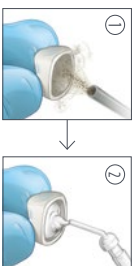


Maxcem Elite™ Universal Resin Cement

Technique Card

I. Restoration Preparation

Lithium Disilicate/Porcelain 30 PSI



Hydraulic etchant
0020300

Metal/Zirconia 60 PSI
Composite 15 PSI



II. Adhesive Preparation*

Unidose™



0020200
OralBond™
Universal

Bottle



0020200
OralBond™
Universal

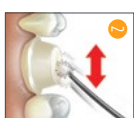


*Optional

IIIa. Adhesive Application*



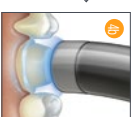
0020200
OralBond™
Universal



0020200
OralBond™
Universal



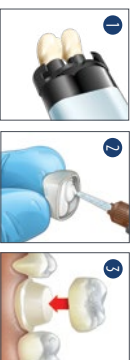
0020200
OralBond™
Universal



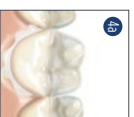
Dent™
Dent™ Plus
Dent™ Ultra — 0020005

*Optional

IIIb. Indirect Restoration Cementation Procedure (Excluding Veneers)



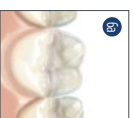
Maxcem Elite



Self-cure
Maxcem Elite



0004400



Self-cure
Maxcem Elite



Dent™
Dent™ Plus
Dent™ Ultra — 0020010

IV. Cementation of Veneers



Edt Etchant
0020015



0020020



0020055



Unidose™
Bottle



0020200
OralBond™
Universal



0020055



Dent™
Dent™ Plus
Dent™ Ultra — 0020055



Maxcem Elite



0020020



Tack-cure
Dent™
Dent™ Plus
Dent™ Ultra — 0020022



0020010



Dent™
Dent™ Plus
Dent™ Ultra — 0020010



0020010

1-800-KERR-123 | kerrdental.com

MKT-21-0540

Kerr™